

#BritishTextileWeek

**BRITISH
TEXTILE
WEEK**

by UKFT

IN ASSOCIATION WITH THE CLOTHWORKERS' COMPANY
& CAMPAIGN FOR WOOL

TEXTILE & COLOUR TRENDS

AW21-22

ukft[®]

Quality and timelessness - the key messages from British mills this season.

As we welcome a season of greater eco-responsibility and sustainability in all its forms, a more ethical approach to manufacturing is the signal.

Nature's beauty and diversity continue to inspire textile design through astonishing colour combinations and intricate structures. Identifying the best way of utilising resources in the creation of desirable fabrics, the sourcing of raw materials, creation of yarns, clever decisions regarding construction and manufacture are all essential.

BRITISH TEXTILE & COLOUR TRENDS AW21-22

AW 21/22 takes us on a seasonless voyage that touches on updating core fabric offerings and the use of trans-seasonal fibre blends. Classic luxury yarns and the ever-popular reworking of vintage heritage patterns combine with a very flexible approach to design and manufacturing for which British mills are world-renowned.

Consumers are becoming more interested in the process that goes into fashion, from the raw materials through to the production and distribution channels of clothing. People are looking for meaning and value in their wardrobe, and also seeking out products with longevity.


Despite present uncertainty, creativity will flourish as forecasted trends and shifts in consumer behaviour have been propelled forward. Incredible synergies result between physical realms and digital, opening the way to new expressions of solidarity in the industry.

These colours and directions were developed in conjunction with designers working for British textile companies.



POISE

ukft[®]



A tribute to fabrics that have withstood the test of time and become special and treasured, they enjoy the exclusivity and back story of the origin of the fibres, design details and techniques involved. An elegant and restrained story drawing on bespoke ways of making and traditional craftsmanship.

Comfort has been a constant in the evolution of fashion for many seasons, but recent events have both justified and intensified its significance. It has led to softened silhouettes, fabrics and trim choice, and also nostalgic and retro influences.

Fabric types include textural lightweights, utility twills and herringbone; two tone micro weave patterns; high twist yarns with dry handles; couture classics; superfine tailoring wools; muted mélange-coloured tweeds; ultra-soft luxury cashmeres.

A refined look of elevated simplicity.

POISE COLOUR PALETTE

Core shades and wardrobe stalwarts



SOFT KHAKE
HEX COLOUR CODE: #818455



CONKER
HEX COLOUR CODE: #A47045



BLACKCURRANT
HEX COLOUR CODE: #512B33



BLUE FROST
HEX COLOUR CODE: #A0AABF



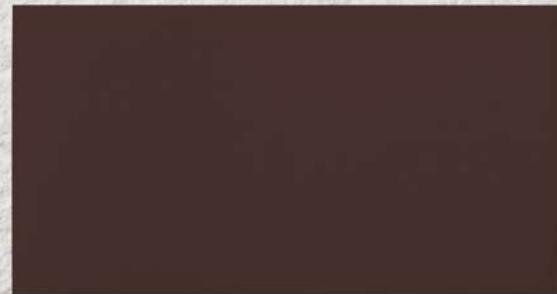
CHAMPAGNE
HEX COLOUR CODE: #C8BCA5



INSIGNIA NAVY
HEX COLOUR CODE: #27293D



RUBY
HEX COLOUR CODE: #7A1F3D



CHOCOLATE
HEX COLOUR CODE: #4B342F

POISE INSPIRATION



Timeless, Authentic, New Classics



British Millerain



Harris Tweed Hebrides



Fox Brothers

Graceful, Bespoke, Vintage



ARTISANAL

ukft[®]

Anything goes as self-expression and personal identities are re-invented and expressed through a maximalist approach to colour and pattern. A free-spirited attitude and avant-garde approach celebrate the fusion of art and textile design with experimental structures and colour pairings. Influences of abstract art, cultural preferences and handcrafted items become multi-layered playgrounds for exciting and daring new fabrics.

An exuberant and indulgent rich fabric theme plays on volume and unexpected surfaces. Light catching weaves, multi-coloured tweeds and tartans, mini-graphic checks, re-arranged or re-positioned stripes and intricate jacquards are to the fore.

Embracing boldness and innovation is paramount with a strong visual impact and optimistic view of a colourful AW season.

ARTISANAL COLOUR PALETTE

Saturated solids for powerful patterns



SAPPHIRE

HEX COLOUR CODE: **#5B7EBD**



SUNSHINE

HEX COLOUR CODE: **#D8AE48**



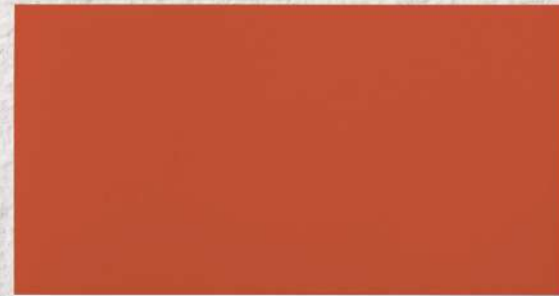
PURPLE

HEX COLOUR CODE: **#7C5379**



WINTER ROSE

HEX COLOUR CODE: **#C53346**



FIRECRACKER

HEX COLOUR CODE: **#D15837**



DEEP TURQUOISE

HEX COLOUR CODE: **#2E6471**



PINK LADY

HEX COLOUR CODE: **#E78B90**

ARTISANAL INSPIRATION

Hand And Lock



Stephen Walters



Unique Decorative
Arts & Crafts Deconstructed
Visual Impact Fresh
Exuberant



Linton Tweeds




Henry Bertrand



HABITAT

ukft[®]



A relaxed story all about well-being and function with a nonchalant attitude. A narrative of sustainability, of taking care, of re-using and valuing the everyday and ordinary and harnessing the properties of the abundant natural world.

Fabrics and organic fibres promote a rustic statement with amplified textures. They lead to tangled and felted constructions and unruly surfaces with soft lofty yarns. Recycled materials and clever hybrid blends demonstrate we never lose sight of our ecological concerns.

Experimenting with natural dye recipes opens doors to delightful broken colour effects that are blurred, marbled, splashed or painterly. Patterns are naturally inspired wool flannels, slubby tweeds, raw silk or linen blends often with minimum processing.

A look that is honest, comforting, ageless, genderless and appealing.

HABITAT COLOUR PALETTE

An easy-going total palette



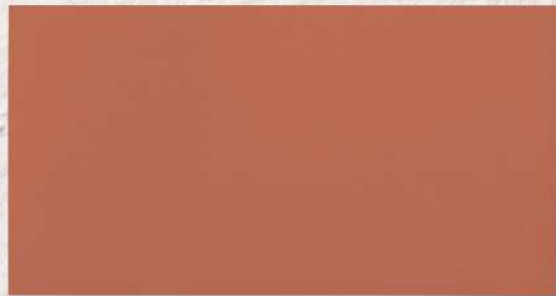
GREEN FRIARS
HEX COLOUR CODE: #658E67



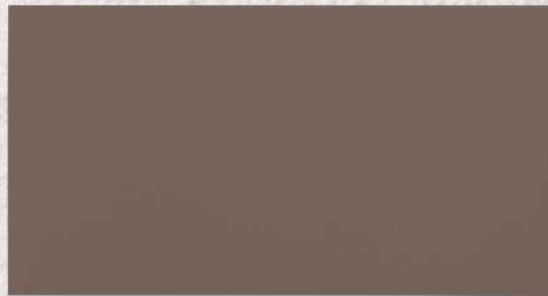
SKY
HEX COLOUR CODE: #5B7E98



LAVENDER
HEX COLOUR CODE: #D1ACCE



CORAL
HEX COLOUR CODE: #CC7457



EARTH
HEX COLOUR CODE: #816D5E



OLIVE
HEX COLOUR CODE: #71643E



SAP
HEX COLOUR CODE: #D3CCA3



BRUISED FRUIT
HEX COLOUR CODE: #865560



GRANITE
HEX COLOUR CODE: #807D7F

HABITAT INSPIRATION

Henry Bertrand



Abraham Moon & Sons



TREND OVERVIEW

- 1 SUSTAINABLE
- 2 NATURALISM
- 3 TRACEABILITY
- 4 WELL-BEING
- 5 IRREGULAR
- 6 ECO-RESPONSIBILITY
- 7 TACTILE

#BritishTextileWeek

BRITISH TEXTILE WEEK

by UKFT

IN ASSOCIATION WITH THE CLOTHWORKERS' COMPANY
& CAMPAIGN FOR WOOL

FIND OUT MORE:

WWW.UKFT.ORG/BRITISHTEXTILEWEEK

[@UKFTORG](https://twitter.com/UKFTORG)

9-15 SEPTEMBER 2020