

**B r i t i s h  
c o l o u r s  
& t e x t i l e s**

autumn - winter 20-21

# **B r i t i s h c o l o u r s & t e x t i l e s**

autumn - winter 20-21

There will be an astonishing variety of texture, colour and pattern from the British mills in their A/W 20-21 textile collections

This will range from quieter, understated luxury fibres and fine wools in muted tones through to dramatic oversized patterns.

Sophisticated tweeds both plain and with micro patterns will become much finer and lighter in weight, whilst unisex looks have an unexpected touch which is soft and dry. By way of contrast, the fluid and rippled surfaces in silk and silk blends add a stylish layer of surface interest. Materiality is being re-invented both from the need to genuinely engage with eco awareness and an aesthetic drift towards glamour and luxury.

We welcome a new and visionary textile season

These colours and directions were developed in conjunction with designers working for British textile companies



# debonair

Confident yet discreet theme based on British tailored neo-classic looks, influenced by heritage and modern thinking on sustainability. This quiet narrative is full of robust thinking for a low energy future. Here the natural raw material is unmistakable and traceable, texture is key and adornment takes a back seat. Renewable fibre components are gathered together and pioneering ideas are applied to create the best in British textiles

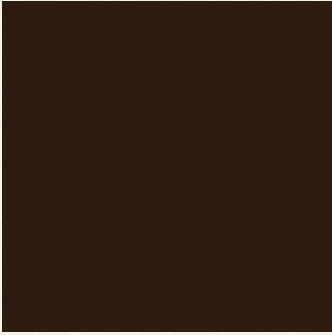
## COLOURS 1 - 8

Assured and stylish shades. 1.mahogany TP 19-1420 2.bespoke navy TP 19-4029 3.grey flannel TP 19-0203 4.port TP 19-2420 5.garnet TP 19-1850 6.bronze TP 18-0832 7.foliage TP 17-0636 8.bone TP 16-1103

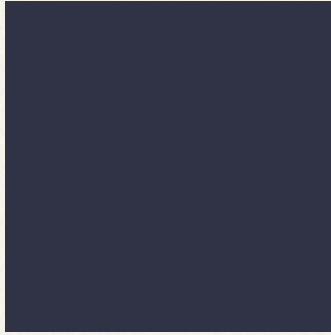
## FABRICS

**British wool used in tweeds that is sustainable and traceable to sheep farms and also offers a low carbon foot print;** milled and flannel surfaces; **dark on dark patterns;** whipcords; **winter lambswool gingham;** soft chalk stripes; **gamekeeper tweeds;** innovative yarn twists on classic structures; **compact yet fluid wool satins;** high twist plain weave with a dry crisp handle and crease resist properties; **luxury super 180's wool;** wool/denim that is also fully machine washable; **discreet use of novelty yarn for added texture;** fine venetians; **velour type finish on woollens;** wool/cashmere that is soft and fluid; **oversized Prince of Wales using twisted yarn;** colour and weave geometrics

# debonair



1



2



3



4



5



6



7



8

british colours & textiles - autumn-winter 20-21



# amplified

The mood embraces disruption – reformed and recycled materials together with global inspiration meet in a common collision – full of creativity and free thought. A strong and gritty look that puts sustainability and climate change at the heart of things. Imaginative mixes where trash becomes treasure and accidental clashes create abundant energy. An exuberant mix of statement fabrics with a fun element.

## COLOURS 9 - 16

Delightful clashes with an artisan spirit. 9.fuchsia TP 18-2015 10. cyan blue TP 17-4530  
11.mustard TP 15-0955 12. thistle TP 17-3735 13.etheral blue TP 17-4041 14.pink lady TP 17-1930 15.frost TP 12-4301 16.mistletoe TP 17-0119

## FABRICS

**Oversized plaids and checks;** boiled wool boucle tweeds; **re-coloured tartans;** fringes; **floating yarns both warp and weft;** text in jacquards; **wool/cotton puckered effects through finishing;** tie-dye and dip-dye yarns used for effect; **highlight colour effects with shades;** large stylised 1950's florals; **diamond/mosaic patterns;** brushed and distressed finish on tartans; **multi-coloured graduation/ombre stripes;** intermittent brushed and un-brushed effects; **blurry block checks;** playful dobby narrative patterns in extra fine merino; **tartan and paisley mix;** coloured lurex yarn to enhance structure and scale of pattern; **exaggerated chunky tweeds.**

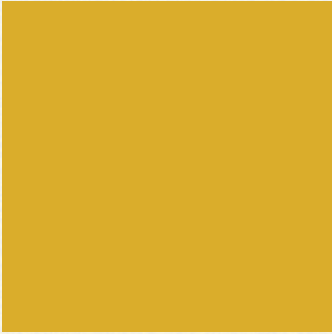
# amplified



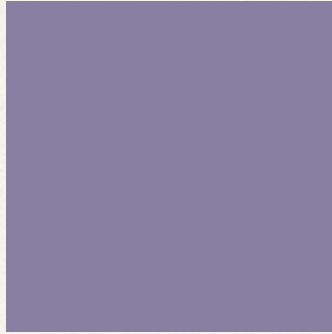
9



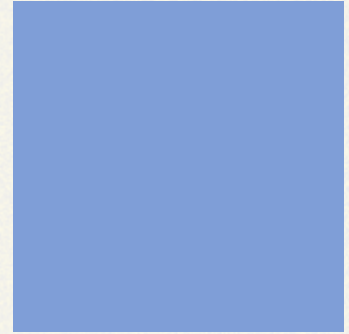
10



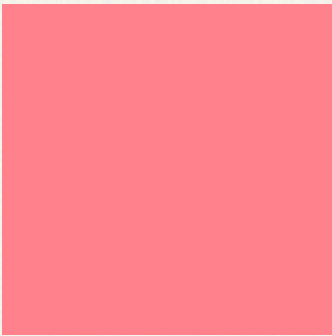
11



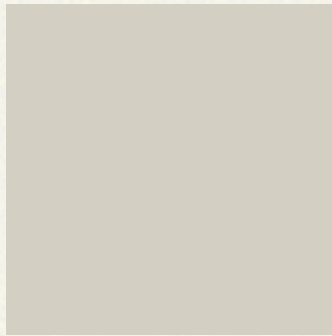
12



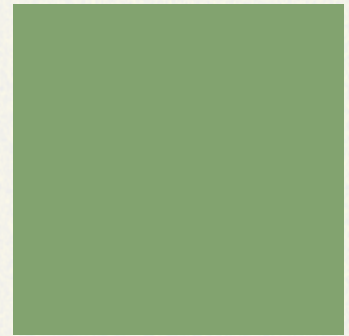
13



14



15



16

british colours & textiles - autumn-winter 20-21



# sensory

Here nothing is designed to jolt the senses, the look is one of quiet appreciation of harmonious beauty; influence comes from craft, interiors and fashion. A quietly innovative story that plays with densities in layers of insulated, brushed, translucent and transparent fabrics. Patterns emerge following tiny repetitions and crystal-like formations; light diffuses through fragile veils whilst glazed sheen adds an otherworldly aspect

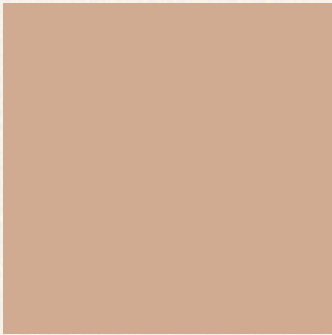
## COLOURS 17 - 24

Crafted, utility and easy tones. 17.oats TP 14-1112 18.winter white TP 12-0804 19.camel TP 15-1040 20.grey blue TP 16-4013 21.mellow yellow TP 16-730 22.spice TP 19-0916 23.soft lavender TP 14-3906 24.leaf green TP 15-0326

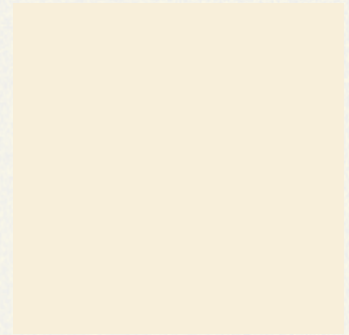
## FABRICS

**Trans-seasonal wool/linen blends;** brushed wools and mohairs; **crinkled and creased finishes;** muted coloured patterns; **yarns of different thickness used in fabrics to create irregular and uneven looks;** fluidity and drape; **papery handles;** glazed effects with semi-transparent yarns; **blurry and indistinct weaves;** traditional Harris Tweed; **oversized textures;** voluminous velours in 100% lambswool; **using 100% recycled yarns created from garments that are shredded and then spun into yarns with compositions of 70%wool 25% polyamide and 5% other fibres;** tonal superfine and lightweight fabrics in 100% pure new wool; **honeycombs;** hopsacks; **tonal**

# sensory



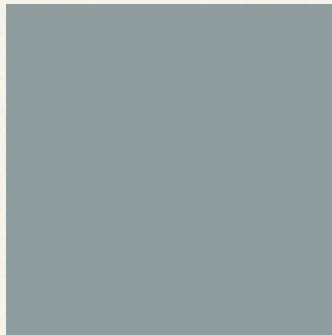
17



18



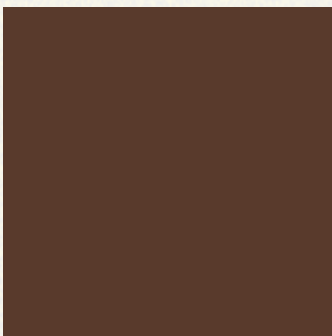
19



20



21



22



23



24

british colours & textiles - autumn-winter 20-21



# **debonair**

- reminiscent
- elegant
- meticulous
- glamour
- heritage
- couture
- refined luxe





# **amplified**

- highly visible
- artisan
- cultural mix
- extravaganza
- powerful plains
- anarchic
- fun





## **sensory**

- caring
- simplicity
- crafting
- meaningful
- eco-aware
- uncomplicated
- textural





# debonair

selection of fabrics from the British Mills  
for autumn-winter 20-21

- re-worked tweeds
- graphic patterns
- corded effects
- traditional checks
- mottled textures
- vintage vibe
- tailoring flannels







# amplified

selection of fabrics from the British Mills  
for autumn-winter 20-21

- oversized designs
- variegated colour
- puckered effects
- bold checks
- novelty yarn
- vibrant semi-plains
- stand-out dobbies





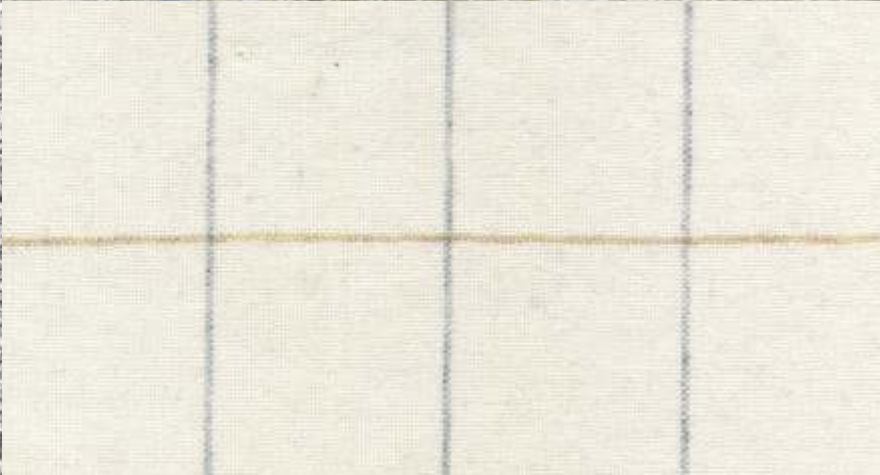


# **sensory**

selection of fabrics from the British Mills  
for autumn-winter 20-21

- shadow effects
- fringes
- brushed surfaces
- airy checks
- visible melanges
- textured herringbones
- tactile handles







For further information, please contact [textiles@ukft.org](mailto:textiles@ukft.org)

ukft<sup>®</sup>  
ukft.org